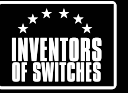




**HAVELLS**  
**Crabtree**

— Switching solutions since 1918 —



# MASTERPIECES

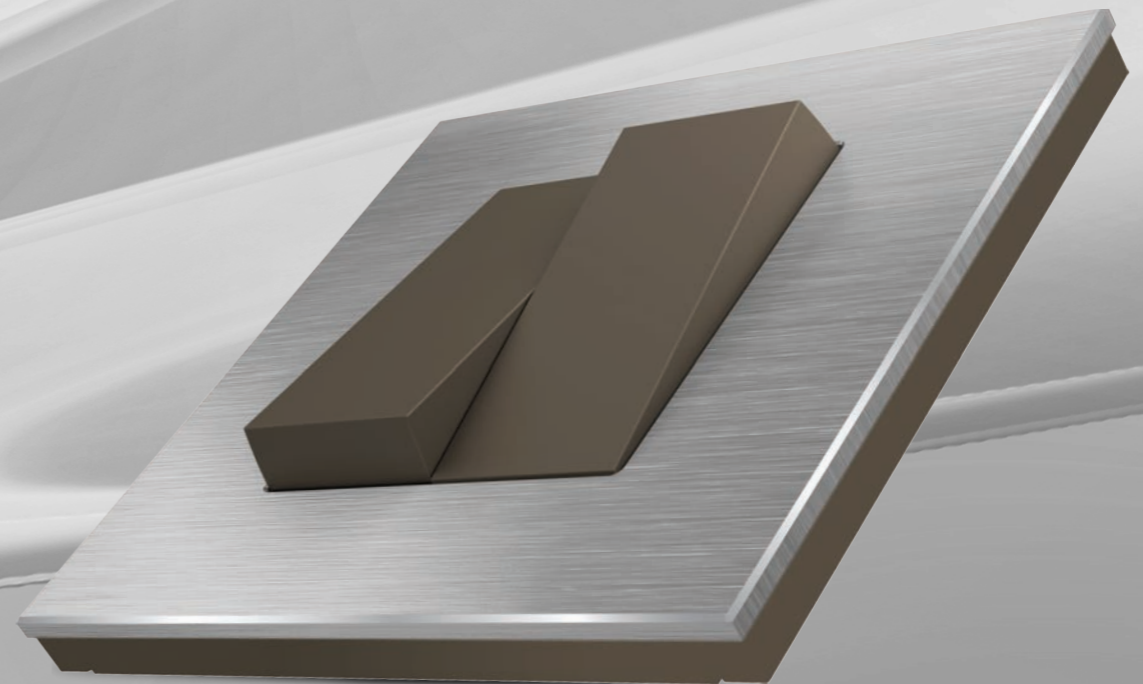
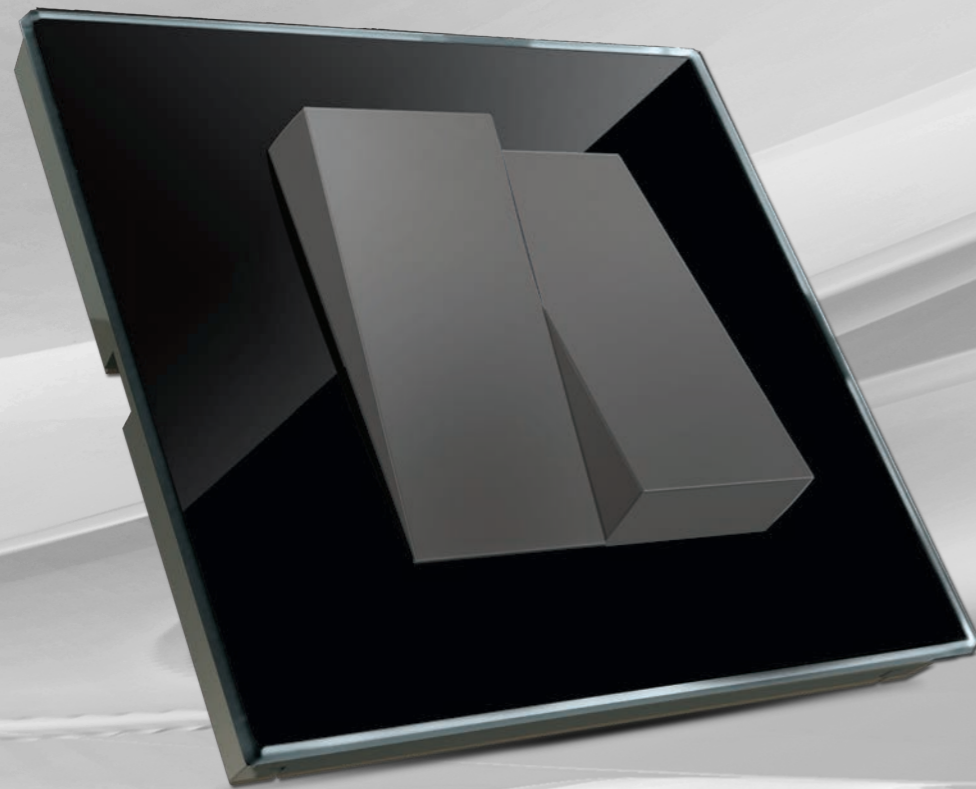
of exquisite craftsmanship



# Perfectionists Create Masterpieces

## Inspiring switch design options

They leave their signature mark on everything, without even trying. This is the spirit that Crabtree believes in. When aesthetics combine with state-of-the-art technology, you get a product that shines through its competition. These ranges of switches from Crabtree are designed to dazzle.



# HAVELLS

## A LEGACY

Havells Crabtree creates products of global distinction and continues the legacy of being born under a British brand which invented switches. With a century's worth of global experience, Crabtree has worked relentlessly towards offering unique solutions to consumers for their homes and offices, focusing on blending aesthetics and technology. With a range of designer smart modular Switches, anti viral ranges and IoT enabled products for both residential & commercial applications, we combine our 100 year legacy with the latest trends & customer needs.

For us, safety and comfort go hand in hand. We adhere to stringent quality checks, making your office and home, a safe place for you and your loved ones.



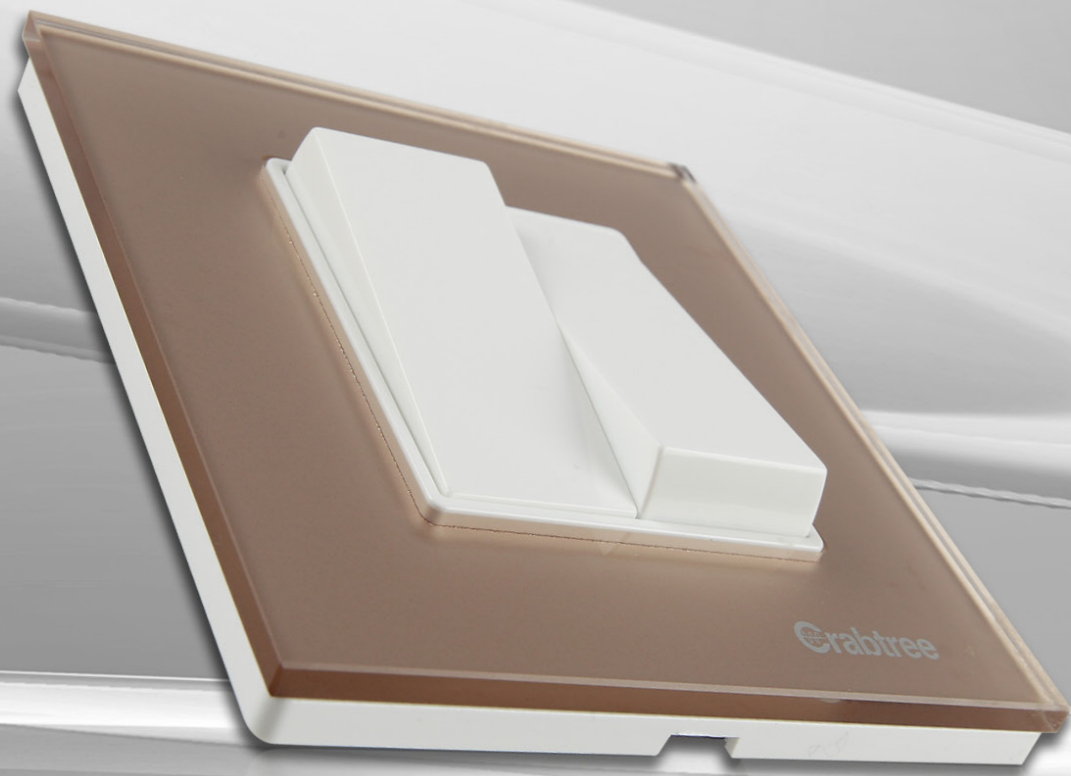
Smart 



# Presenting MURANO

## SWITCHES

The show-stopper, the conversation starter. An absolute thunder-stealer. It's exactly what you need when you wish to stand out and won't settle for anything less than the best.



# Futureproof switches

Our switches are designed for inductive and resistive load with 10 AX and 16 AX ratings.

## Lifetime endurance

Our switches are tested for over 1 lakh plus cycles and our sockets for over 5000 cycles.

## Experience & convenience

Our switches range offers unique features such as soft action switches, USB Sockets, Child safe sockets and many more options for increased convenience

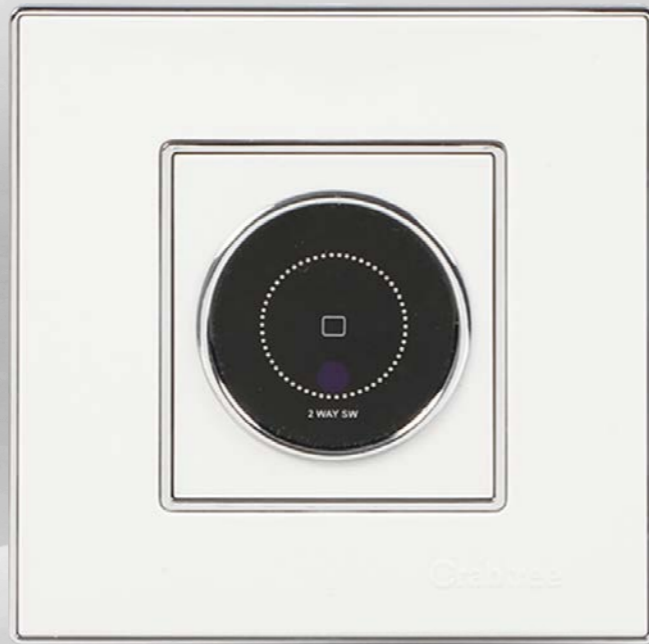
## Designed for safety

We strictly adhere to BIS standards: IS3854 & IS1293 and our products are IP20 protected. We offer shuttered sockets, shrouded terminals and arc shield for zero visibility of sparks.



## Inspiring switch design options

Our switches come in a variety of exciting design options to suit every need.



IR Based  
Touch Switches



Super Soft Rocker  
Switches



Flat Modular  
Switches

## Front plate design options

Our front plates come in a variety of exciting design options to suit every need.



White with  
Chrome Bezel



Innovative  
Handcrafted Die-Cast



Pearl White



Azure (Available in)



Glassique (Available in)



Sparkling Black



Classy Wood



Steel Grey



Camel Gold



Artic White



Silky Silver



Stone Beige

# Designed with Perfection Athena

## SWITCHES

A combination of aesthetically appealing design and excellence of high level engineering. The Athena range has been aesthetically designed to complement your tastefully designed interiors and give your home the beauty it deserves. These ranges enhance the Beauty of the walls they adorn with options like the Decorative Amare range, Moderna and the Classic Athena range.





# Takes good Care of your hygiene

Crabtree unique ViruzSafe™ Technology has been tested for both Viruses & Bacteria, which within 1 minute of virus exposure on the exposed surface area of Switch knobs, Sockets, Front Plates etc. ensures 92.5%\* anti-viral efficacy and within 2 hours ensures 99.89%\* anti-viral efficacy. Along with this, it also ensures anti-bacterial efficacy of 99%\* within 24 hours. Anti-Viral & Anti-Bacterial efficacies have been tested using International standards – ISO 21702 & JIS 2801 respectively. These features are introduced in Crabtree’s legendary Athena White and Signia White ranges.

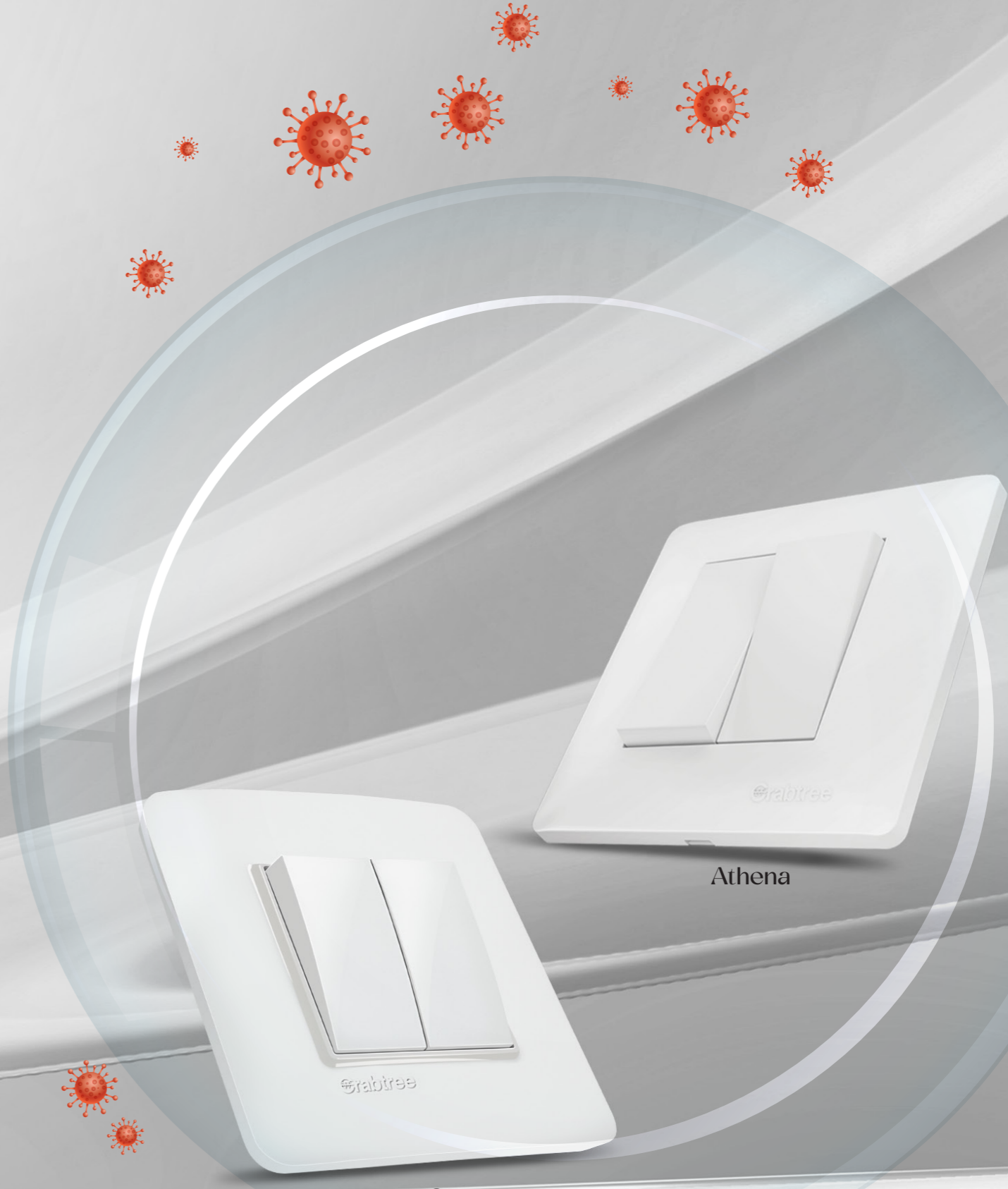
**92.55%\*** anti-viral efficacy within 1 minute

99%\* anti-bacterial efficacy



\*Terms & Conditions apply. For terms and conditions, visit : [www.crabtreeindia.com](http://www.crabtreeindia.com)

\*\*ViruzSafe is Applicable only in White color



Athena

Signia

# Crafted with passion

The Athena range offers a wide variety of finishes to choose from. There's a Design for every home, taste and style.

## Athena *Moderna*



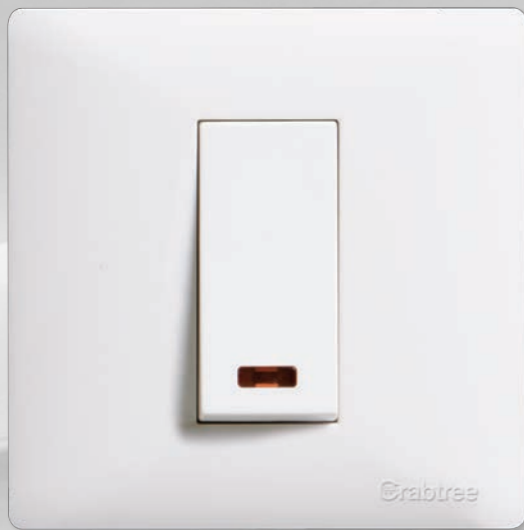
Elephant Grey



Grey with Golden Trim

## Athena *Classic*

ViruzSafe™  
Technology

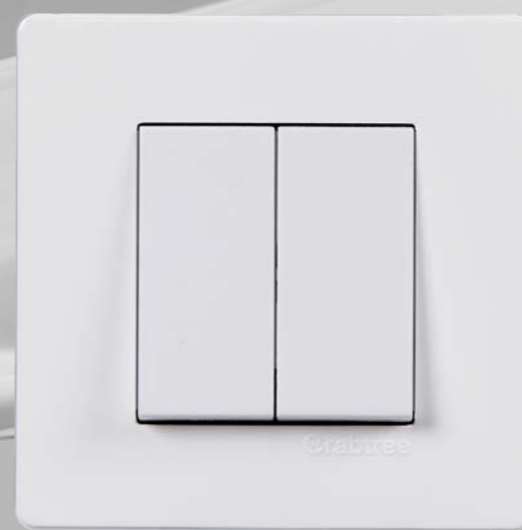


Chalk White#



Elephant Grey

ViruzSafe™  
Technology



Chalk White#



White with Grey Trim

#ViruzSafe is Applicable only in White color

#ViruzSafe is Applicable only in White color

# Athena Amāre

## Decorative Plates

### Truly Inspiring

Made of genuine glass, wood and metal, Amare range of switch plates are truly inspired by nature. Available in modern finishes with Matte effect, the Amare range complements your tastefully designed interiors.



Metal (Available in)



Lustrous Silver



Eclipse Black



Brushed Amber



Glass (Available in)



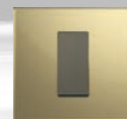
Dazzle Black



Snow White



Somber Green



Glittery Sand



Wood (Available in)



Teak Wood



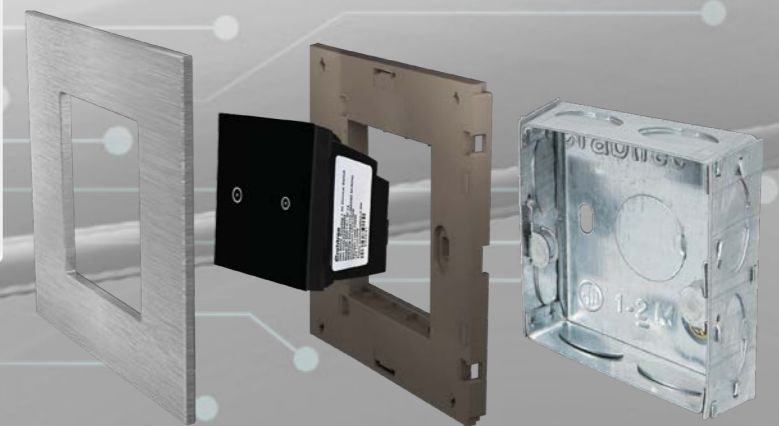
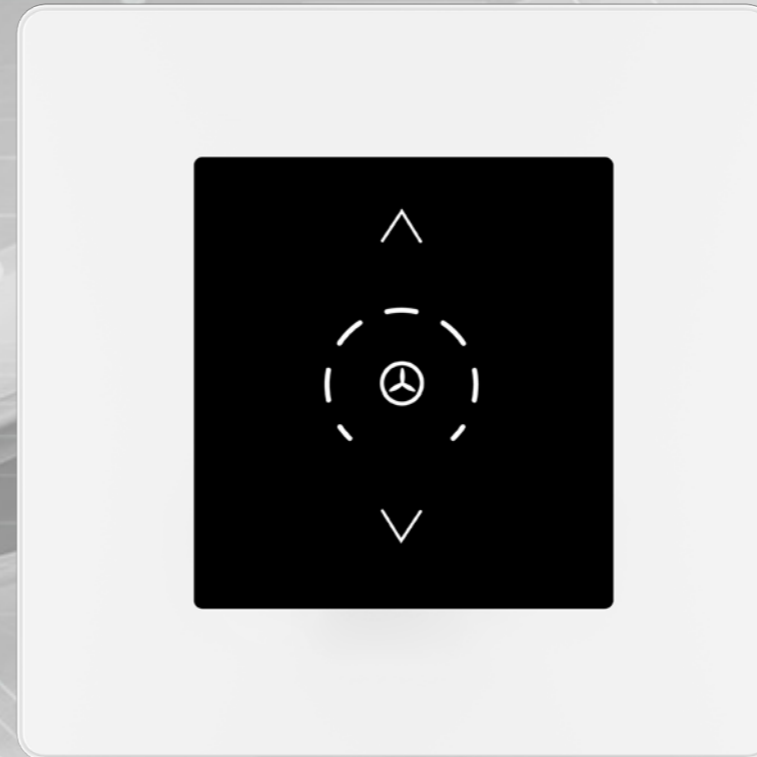
Natural wood

# A blend of Beauty with Intelligence

## SMART SWITCHES

A complete range which fits seamlessly in existing switch boxes. Simply replace the manual switch with the SmartH and add a touch of class with Athena decorative plates & it's up and ready

Smart 



- 🕒 No Rewiring Needed
- 🕒 Easy To Install
- 🕒 Smart App Control
- 🕒 Voice Control

**Retrofitting Existing Switches**

#Compatible with Athena plates only.

# Complete peace of mind

## SAFETY



Our switches are designed for safety with strict adherence to BIS standards. They feature shuttered sockets, Arc shield to avoid spark visibility, IP 20 protection and shrouded terminals as well.

## CONVENIENCE



Convenience is at the core of our designs. We offer ease of installation with front loading and fast removal mechanisms. Our Switches with double rocker mechanism have a soft action, our fan regulators offer a 8 step hum free experience and our USB sockets offer 2.1 A fast charging options.

## FUTURE PROOF



Longevity is one of the most important aspects when creating these switches. These switches can handle both Inductive and resistive loads and offer a long, trouble free usage life.

# Switch to peace of mind

Presenting Crabtree **Soft Action Switches** that require low force to operate and create minimal noise to help maintain the silence for your loved ones.



Available in Both Athena Classic and Moderna Design



Conditions Apply

**BIS**  **CE**  **RoHS**  COMPLIANT

92.55% Anti-Viral Efficacy within 1 Minute available only in white

# Made to Mesmerise. *Signia*

## SWITCHES

Meet the all new Signia range of switches. A perfect amalgamation of beauty, style and elegance. The switches come with multiple front plate options. Characterised by minimalistic design and seamless curves, Signia is the perfect way to adorn those happy walls!



#ViruzSafe is Applicable only in White color



# Signia

RANGE

ViruzSafe™  
Technology



Signia White#



Signia Silver



Signia Gold



Signia Grey

ViruzSafe™  
Technology



Signia PC white#  
with Chrome Bezel



Signia PC Grey with Rose Bezel

#ViruzSafe is Applicable only in White color

# Built to suit your every need

## Flexibility

Design option  
Front plate with pillar & without pillar

**Flexible Modular Plates**  
7M front plate is compatible with 6M GI box & 9M front plate is compatible with 8M GI box.

**Dual orientation**  
Unique switch plates & switches that can fit horizontally & vertically basis wall space availability.

## Designed for Safety

**Shuttered sockets**  
Safety against electric hazards.

**Double shield technology**  
Double rocker mechanism with AX rating switches for enhanced safety.

## Designed for a Wow Experience

**Smooth operation**  
Super smooth switches.




**Easy installation**  
Easy front loading and removal.



# Signia grande

## Luxury Lasts Forever

Presenting the stunning range of masterfully crafted wood, glass and metal plates from Crabtree Signia.

-  Chamfer design on the sides
-  Metal inner plates
-  Bezel (Chrome and Rose Gold available)\*



Glass (Available in)



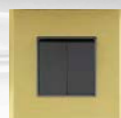
Sandi Wood



Dusky Wood



Metal (Available in)



Gold Shimmer



Sterling Silver



Charcoal Black



Glass (Available in)



Igloo Glass



Raven Glass



Frosted Husky



Frosted Slate



Copper Reflection



Silver Sheen

# Signia

## SMART SWITCHES

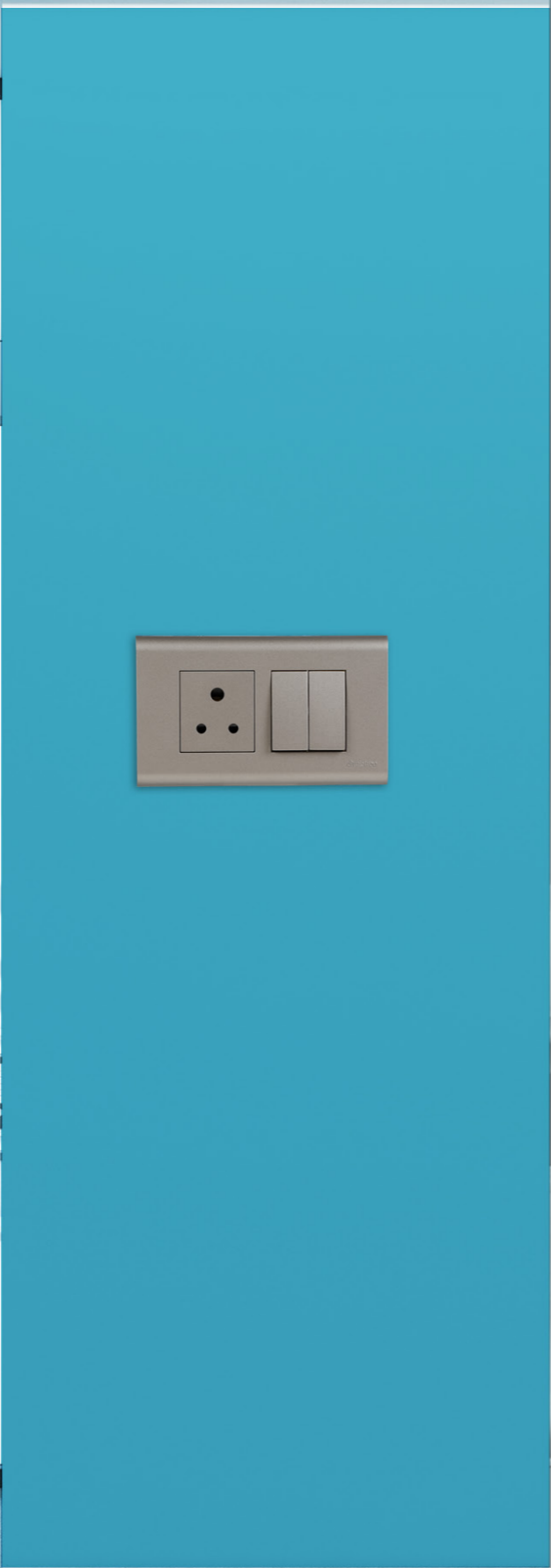
Signia Smart Modules in Signia Grande Plates is a perfect blend of technology with aesthetics. Packed with the convenience of easy installation, Wi-fi operation, Alexa and Google Home compatibility makes it a definite choice for any smart home owner.

Switches that follow your command.

-  Works on Havells Sync App 
-  Voice, Touch & App Operated
-  Easy Installation
-  Retrofit Solution
-  Works with Wi-Fi (2.4 GHz)



SIGNIA  
SMART



# Get addicted To perfection Verona

## SWITCHES

The Verona range of switch have a compact and elegant design with shrouded terminals, captive screws and IP 20 protection.

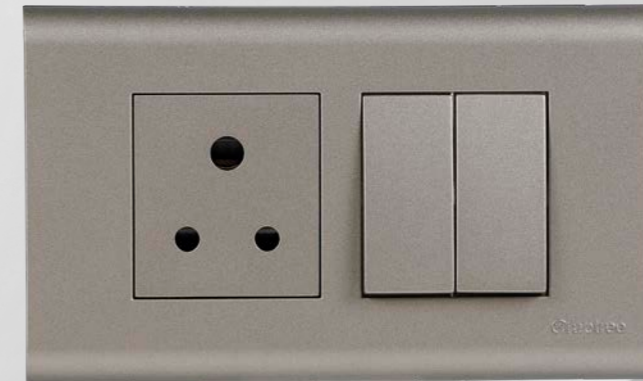


VERONA

## The Verona range

This is made from FR grade poly carbonate which makes them shock and dust proof, and resistant to high impact and UV rays. It offers frames with sharp edge contours, and also allows front loading and front removal of the switch & socket and have a dual shutter mechanism which makes them ideal for 2 Pin Mobile charger.

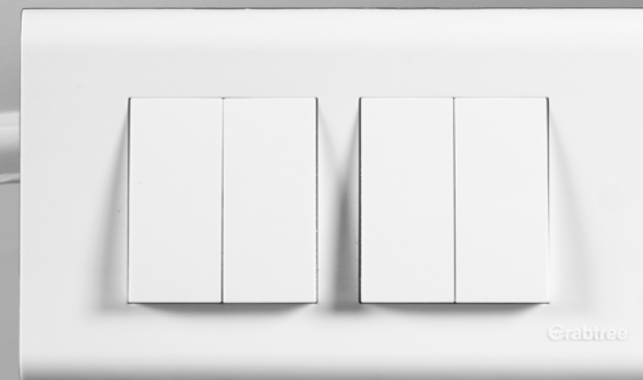
- Dust repellent design
- Safety Shutter Sockets  
IP 20 Design, Pillar Design to avoid pop out of accessories
- Easy Front loading.
- Future proof  
8+1 fan regulators for incremental speed & BLDC\* fan regulators



Verona Grey



Verona Black



Verona White

BLDC\* regulators available in all ranges of Crabtree switches

The perfect  
Blend of beauty  
And sophistication

*Thames*

SWITCHES



THAMES

## Thames range

Thames range of Switches are available with two types of modular plates - Platinum and Sapphire, each of which adorns your wall and enhances the beauty of the interiors.



*Platinum - Grey*



**Sapphire**



*Platinum*



# Switches that love the rain

## WEATHERPROOF SWITCHES

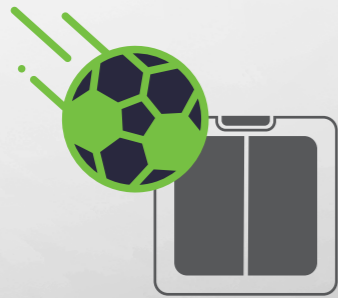
Presenting the all-new range of outdoor switches with **WeatherPruf™** technology



WEATHER PRUF



IP66 Rating  
Water & Dust  
Resistance



IK7 Rating  
Impact Resistance



Anti-theft  
Padlock System



Flush  
Installation



# IP 66 protection is applicable even when socket is plugged in with outer flap closed in the Switched Socket Module

\*Applicable for Switched Sockets only.





## APPLICATION AREAS



# Crabtree Range of

## SMART PRODUCTS

The Crabtree Automation Solution is a must-have for any modern residential property. It has been designed to be completely unobtrusive, while providing convenience, security, & energy efficiency. All systems can be controlled from elegant panels, or via Android and iOS devices, from anywhere in the world. Our wide range of offerings can be customised to meet a client's exact requirements in residential, commercial or hospitality sectors.



# Solutions for All kinds of

## APPLICATIONS



### Lighting Control

- On / Off
- Dimming
- Occupancy
- Mood / scene
- Time scheduling
- Day light harvesting



### Audio/Video Control

- Home theatre/entertainment
- Multiroom audio
- Integration in to user scenes
- Capability of interfacing with NAS & FTP/cloud server



### Security

- Intrusion detection
- Third party products integration (electronic door locks / cameras etc.)



### HVAC Control

- Temperature / mode
- Humidity / zone / individual controls
- User programmable mood / scene Integration
- LonWorks or BacNet Protocol for VRV/ chiller/ split /window system



### Curtains/shutters

- Brightness control
- Temperature control
- Presence detection
- Integration into user scenes



### Visualization & Monitoring (IBMS)

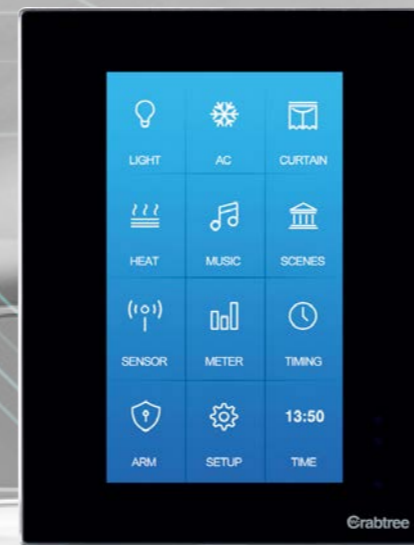
- Lighting control integration through IBMS
- HVAC control integration through IBMS



# Buspro wired Automation

## SOLUTIONS

The Bus pro solution is a wired automation platform that works on proprietary Bus communication protocol. This is an extremely versatile and extensive system that allows integration of all kind of applications in a residential or commercial environment. It's highly suitable for new or complete renovation buildings allowing electrical & structural changes.



# WIREFREE NEXT

## AUTOMATION

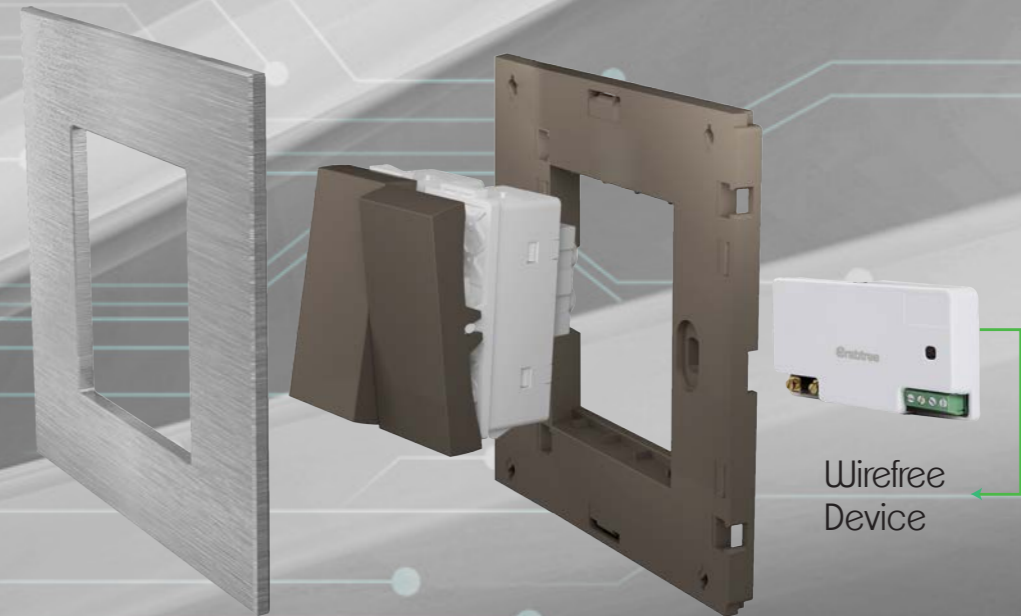
The Crabtree wireless home automation platform is designed to easily retrofit into existing homes & new homes as well. The wireless home automation solutions can be fitted into any pre-existing home.


\*Convert Your Existing Home into a Smart Home under 4 hours


\*T&C apply & subject to site condition





## KEY FEATURES





 No structural changes required.

 Performs autonomous tasks & schedules events.

 Works with wifi.

 Creates simple automation routines for mobile. One Touch Operations.

 Voice and app operated.

 Complementing range of smart accessories to convert your regular home into a smart home.

# Smart

## SENSOR

Crabtree range of occupancy sensors from Crabtree are designed to deliver energy savings and control lighting and other similar loads in a range of commercial and domestic applications. The Sensors gets activated automatically by presence of humans within coverage area & gets deactivated when they leave. This is one of the easy & smart way to save energy in both commercial and residential applications.



Microwave Sensor  
(Dual Mount )



Microwave Sensor  
(Flush mount)



Microwave Sensor  
(Surface mount)



PIR Presence Sensor  
(Surface mount)



PIR Motion Sensor  
( Surface mount)



PIR Sensor  
(Dual Mount )



Mini PIR Sensor  
( Surface Mount)

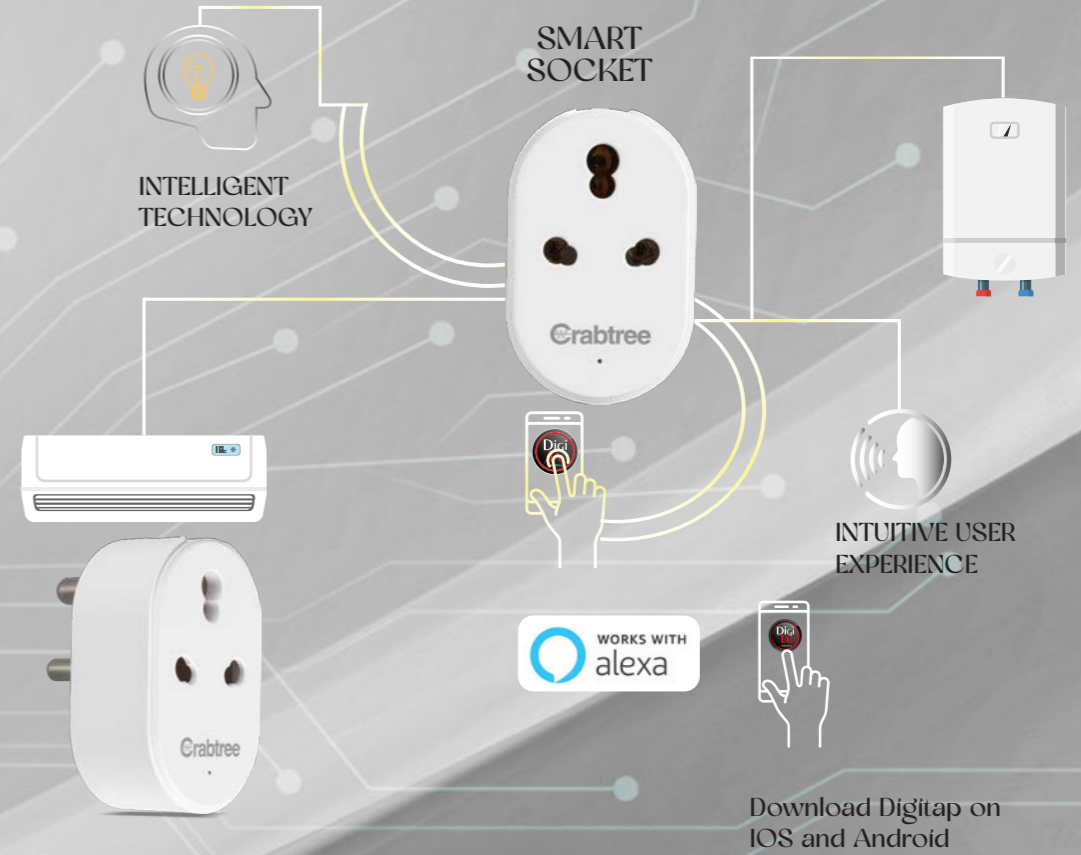


PIR Motion Sensor  
(Flush mount)

# Smart SOCKET

Connect to your Home Wi-Fi and Control your Devices from anywhere with your mobile or voice. So easy to use with the Havells DigiTap Mobile App Using the app you can switch on or off your devices from anywhere and at anytime. Schedule a time, check the status of your devices online and more; all from your phone.

**PLUG INTO  
A CRABTREE  
SMART SOCKET  
FOR TOUCHLESS  
SWITCHING**



# Smart IR REMOTE

One app. One device.  
Multiple appliances.



Range 360°  
Upto 5 metre  
radius



Voice  
Control



Works with  
Most IR based  
appliances



App  
Control



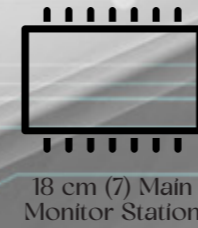
VIDEO DOOR PHONE



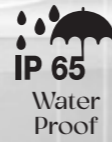
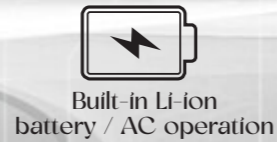
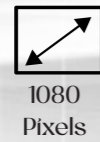
17.78 cm (7) WIRED VDP



Wi-Fi + Wired Video Intercom Kit



Wifi Video Doorbell



VDP & IR REMOTE



# HOME



Ducor for your Master Bedroom



Energy Saving Sensors



Vertical Signia For space optimisation



Signia Grande adding vibrancy to your children's room



Fan Regulators  
360° rotation  
Differential Speed  
8+1 Step Regulator 2 M

BLDC\* Fan regulators also available in all crabtree range



Modular Multi Media Hub for your Home Theatre



7M & 9M Plates giving more flexibility



Foot lamp



Switch Options: Mechanical/ Flat/ IR/RF



Type C Fast Charging USB



Type A Fast Charging USB



VDP for Safety & Security



Buzzer and Chime Modular Door Bell



Automation upgradation with SmartH and Signia Smart

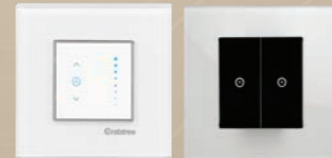


Signia Smart

# OFFICE



Modular Multi Media Hub for your Conference Rooms



Automation upgradation with SmartH and Signia Smart



Amare Decorative Plates with Smart H



Energy Saving Sensors for false roofing



Buzzer and Chime Modular Door Bell at reception



Vertical Signia For space optimisation



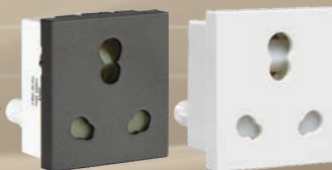
Type C Fast Charging USB



Type A Fast Charging USB



7 M & 9 MH Plates for IT workstations



RAW and UPS power differentiation



# HOTELS



Crabtree hotel systems are designed to deliver a holistic solution for the individual needs of each hotel

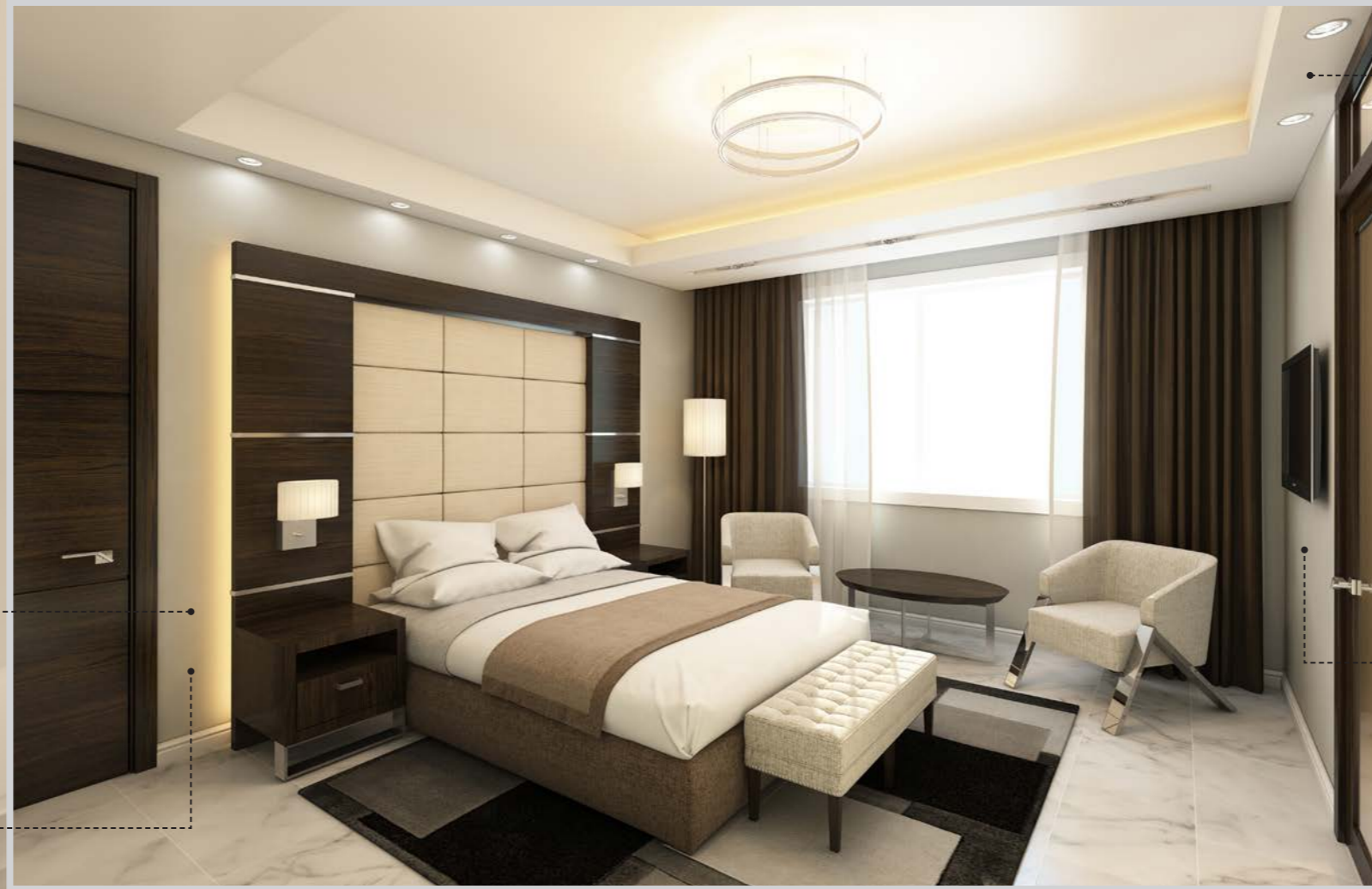


Complete range for Hotel needs

30 A Key card with time delay \* Industry Best



7 M & 9 M H Plates Adding more to Convenience



Energy Saving Sensors for false roofing



Modular Multi Media Hub for your entertainment

# Certified to The highest

## STANDARDS

- ISO 50001:2011
- ISO 14001:2015
- ISO 45001:2018
- ISO 9001:2015



# HAVELLS

## REGIONAL & BRANCH OFFICES:

**NORTH - REGIONAL OFFICE:** CORPORATE OFFICE: QRG TOWERS, 2D, SECTOR-126, EXPRESSWAY, NOIDA-201304,  
TEL: 0120-3331000, DELHI: TEL: 011-47676700, 23888200,

CHANDIGARH: TEL: 0172-4232400-401, DEHRADUN: TEL: 0135-6670202, NOIDA / HARYANA: TEL: 0120-3331000,  
LUDHIANA: TEL: 0161-4676000 / 24, JAMMU: TEL: 0191-2478330, 2479330,  
SRI NAGAR: TEL: 0194-2490431, JAIPUR: TEL: 0141-3914645, 3988210,

JODHPUR: TEL: 0291-9214201640 / 45, LUCKNOW: TEL: 0522-6672100, KANPUR: TEL: 0512-6710400, 6710409

**EAST - REGIONAL OFFICE:** KOLKATA: ICC TOWER, 5TH FLOOR, 4 INDIA EXCHANGE PLACE,  
KOLKATA-700001, TEL: 033-40129851/ 52, BHUBANESHWAR: TEL: 0674-6668101/102/103/104,  
GUWAHATI: TEL: 0361-2134521, 2458923, 2460355, SILIGURI: TEL: 0353-2525907,  
RANCHI: 0651-2244861, 2244862, 2244864, 2244868, 2244869, JAMSHEDPUR: TEL: 0657-6542492, 09234369436,  
PATNA: TEL: 0612-2207221, 2207222, 2207223, 2655518

**WEST - REGIONAL OFFICE:** MUMBAI: 1271, SOLITAIRE CORPORATE PARK, BLDG. NO. 12, 7TH FLOOR,  
ANDHERI - GHATKOPAR LINK ROAD, CHAKALA, ANDHERI (EAST), MUMBAI- 400093.  
PH.: 022 - 67298600-602, AHMEDABAD: TEL: 079-40061111, 40060738-740,  
INDORE: TEL: 0731-2572340-41, 4009998 (AIRTEL), RAJKOT: TEL: 0281-2481112, 2921212,  
NAGPUR: TEL: 0712-2240932, 2242692, 2242699, PUNE: TEL: 020-64016413 / 14, RAIPUR: TEL: 0771-4243400 / 01,  
SURAT: TEL: 0261-2350137, 9979890137, JABALPUR: TEL: 0761-4064491

**SOUTH - REGIONAL OFFICE:** CHENNAI: SIGAPI ACHI BUILDING, NO. 18 / 3, 6TH FLOOR, RUKMANI LAKSHMIPATHY  
ROAD, EGMORE, CHENNAI-600008, TEL: 044-42280600, 605,  
BANGALORE: TEL: 080-49075000, COIMBATORE: TEL: 0422-4550200, 2305199, 2306199,  
HYDERABAD: TEL: 040-27533372, 27533355, 275333632, 66320407/0408/6401/6402,  
KOCHI: TEL: 0484-4099000, VIZAG: TEL: 0891-6514339, VIJAYAWADA: TEL: +91-9247058847/57,  
CALICUT: 0495-4019194, MADURAI: 0452-4267022, TRIVANDRUM: 0471-4015323,  
HUBLI: 0836-4248600, TRICHY: 09944460160

REPRESENTATIVE OFFICES: • GOA • SOLAPUR • GWALIOR • KATHMANDU • BHOPAL

Images/diagrams for illustrative purposes only.

Copyright subsists. Imitation of trade dress, graphics and color scheme of this document is a punishable offence.

Actual products may vary in colour, design, description and colour combination etc. Although every effort has been made to ensure accuracy in the compilation of the technical detail within this publication. Specifications & performance data are constantly changing. Current details should therefore be checked with Havells Group.

M means Module in this document.

## Havells India Ltd.

QRG Towers, 2D, Sector -126, Expressway, Noida - 201 304 (UP) INDIA  
Ph. +91-120-3331000, E-mail: marketing@havells.com, www.crabtreeindia.com

Customer Care No. : 08045 77 1313

Join us on Facebook at [www.facebook.com/havells](http://www.facebook.com/havells) and share your ways to save the planet!

CIN - L31900DL1983PLC016304.